

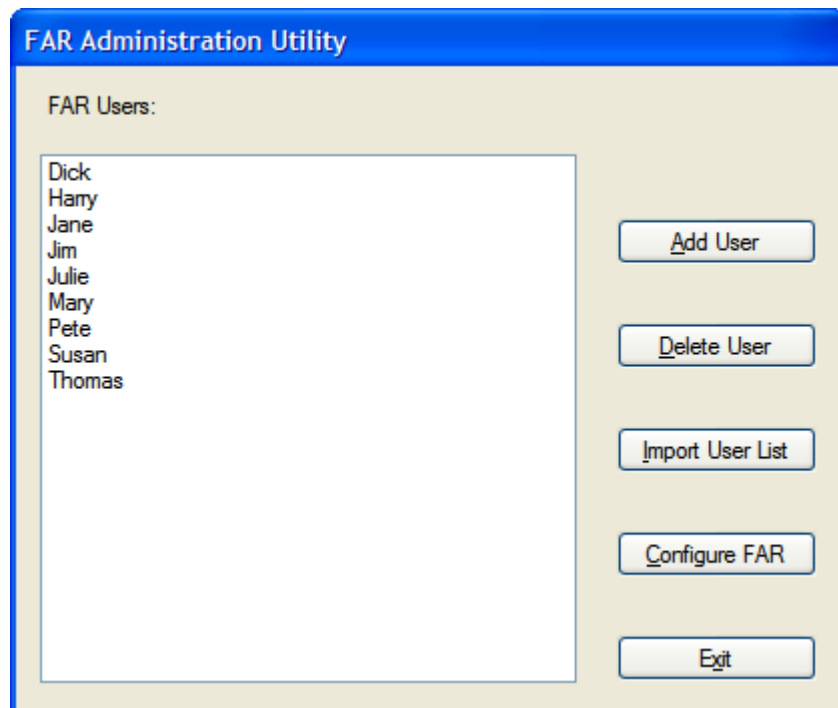
FAR Administration

The FAR Administration tool allows you to manage user accounts for your company and set common configuration values.

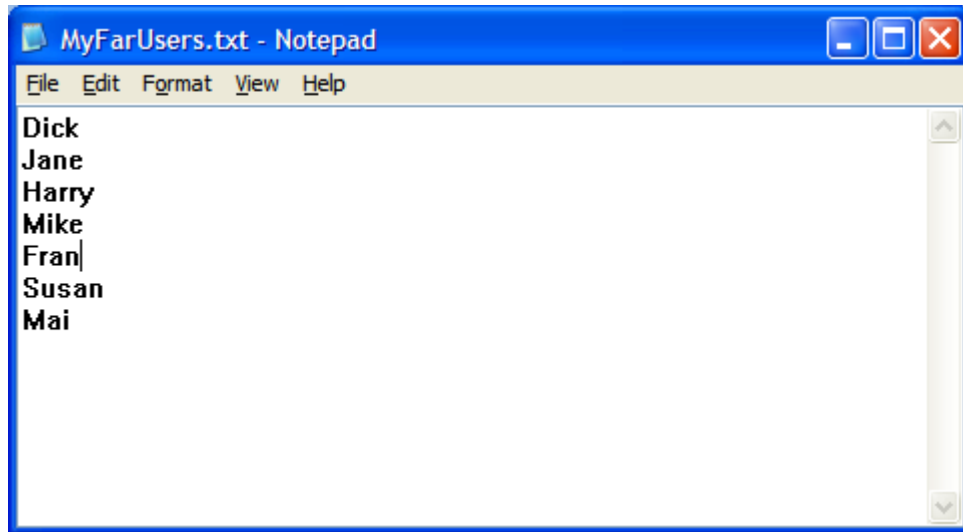
Manage User Accounts

The FAR Administration Utility provides three buttons for managing user accounts.

- **Add User** displays a small dialog box for entry of a user name. Enter a name and click the Ok button and the user name is added to the list of FAR Users. Names in the FAR Users list are the users who will be able to use The FAR Manager application and login onto the Revit Catalog web site.
- **Delete User** removes the currently selected user from the list of FAR Users. Deleting a user from the FAR Users list revokes their registration on the Revit Catalog web site and blocks usage of the FAR Manager application.



- **Import User List** reads a list of users from a text file. The text file should contain one user name per line. For example:

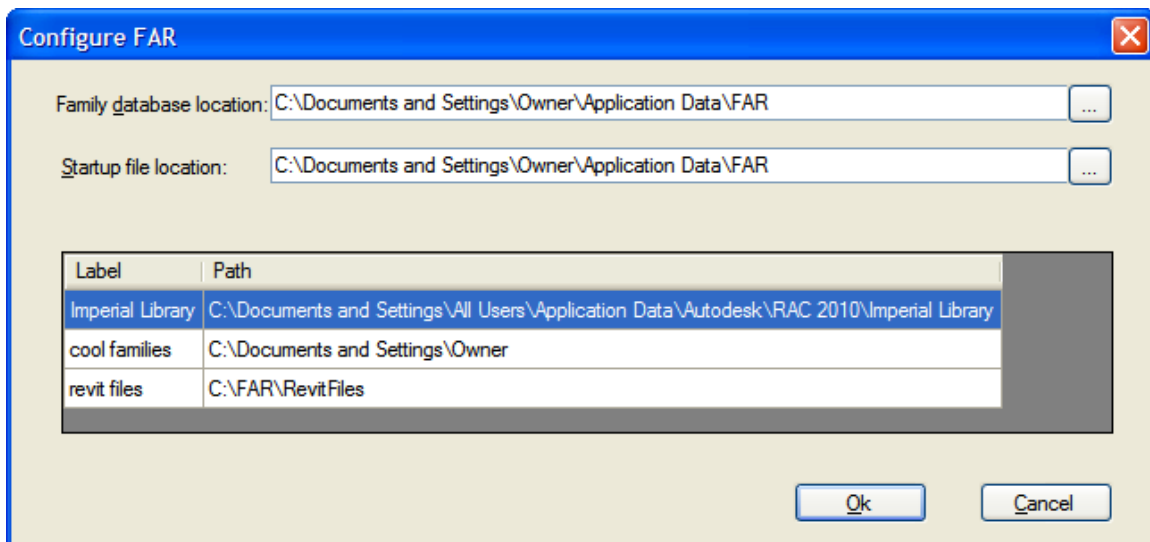


If the user name is already in use for your company, the name is ignored.

As the users are registered, they are registered with the same company name you used when you signed up for FAR downloads. The users are also assigned a default password of 'password'. Each user must provide their user name, company name, and password when they initially log onto the Revit Catalog web site and periodically as they use the FAR Manager application.

Configure FAR

The **Configure FAR** button presents a dialog box that you use to define configuration information.

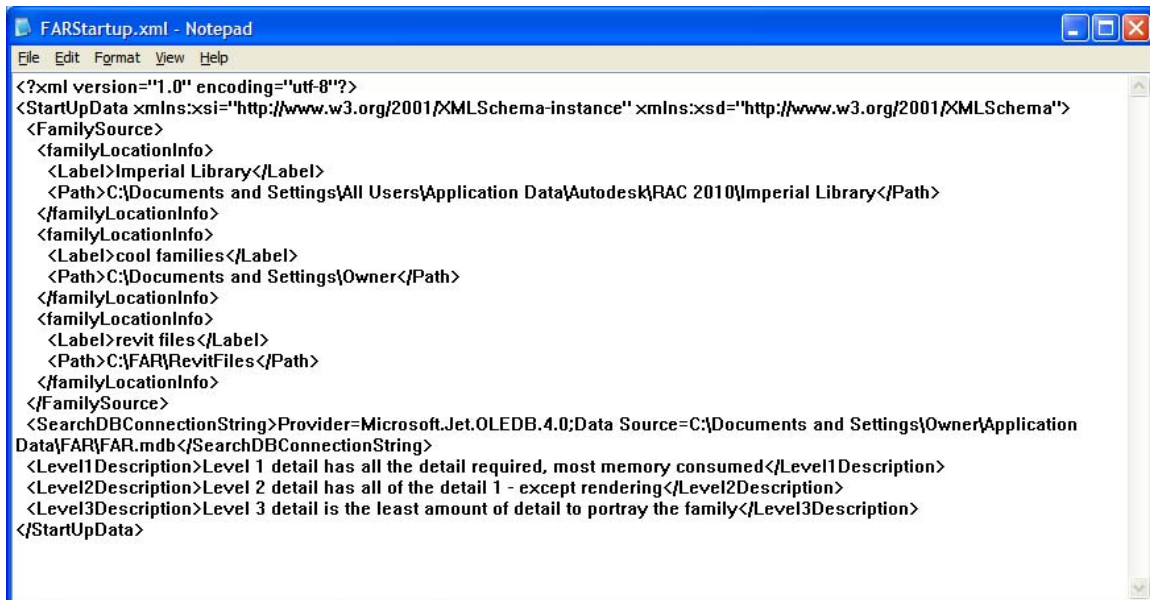


- **Family database location** specifies the path to the Revit family catalog. The BIM Manager utility contains an option to catalog Revit families in user-selected folders. The

catalog information is saved in the Family database. This database can then be searched by family name, type, category, subcategory, parameter name, and parameter value.

The family database should be located on a server so that is accessible to all FAR Manager users. Be sure that permissions are set to allow access by all users. The permissions must be assigned before running the FAR Administration application.

- **Startup file location** specifies the path to the configuration file for FAR Manager and BIM Manager. The configuration file is an XML document that contains the information shown in the Configure FAR dialog.



```
<?xml version="1.0" encoding="utf-8"?>
<StartupData xmlns:xsi="http://www.w3.org/2001/XMLSchema-instance" xmlns:xsd="http://www.w3.org/2001/XMLSchema">
  <FamilySource>
    <familyLocationInfo>
      <Label>Imperial Library</Label>
      <Path>C:\Documents and Settings\All Users\Application Data\Autodesk\RAC 2010\Imperial Library</Path>
    </familyLocationInfo>
    <familyLocationInfo>
      <Label>cool families</Label>
      <Path>C:\Documents and Settings\Owner</Path>
    </familyLocationInfo>
    <familyLocationInfo>
      <Label>revit files</Label>
      <Path>C:\FAR\RevitFiles</Path>
    </familyLocationInfo>
  </FamilySource>
  <SearchDBConnectionString>Provider=Microsoft.Jet.OLEDB.4.0;Data Source=C:\Documents and Settings\Owner\Application
Data\FAR\FAR.mdb</SearchDBConnectionString>
  <Level1Description>Level 1 detail has all the detail required, most memory consumed</Level1Description>
  <Level2Description>Level 2 detail has all of the detail 1 - except rendering</Level2Description>
  <Level3Description>Level 3 detail is the least amount of detail to portray the family</Level3Description>
</StartupData>
```

The startup file name is FARStartup.XML. This file can be on a network share or on each user's PC. If the file is on the user's PC, it will be located in the user's application data folder in the subfolder named FAR. For example, C:\Documents and Settings\Owner\Application Data\FAR\FARStartup.XML. Given the nature of the information in the FARStartup.XML file, it is desirable to have all users share a common file.

While it is possible to edit the FARStartup.XML file directly, that practice is discouraged. An improperly formatted file will cause its contents to be ignored by the FAR Manager and BIM Manager applications.

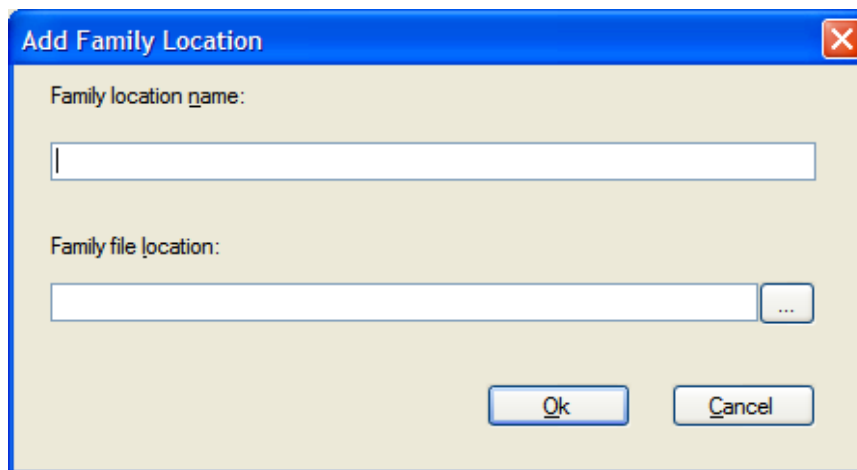
Approaches for sharing a common FARStartup.XML file

There are three suggested approaches for sharing a common FARStartup.XML file. These options are listed in their order of preference.

1. Create a small script file to perform the file copy to the user's application data folder. This script file can be put on the user's desktop and the user can run the script whenever needed simply by double-clicking the script file icon. The script can also be copied to the user's Startup folder (for example, C:\Documents and

Settings\Owner\Start Menu\Programs\Startup) and the script will be automatically run whenever the user starts up their PC. The user can also run the script on demand by navigating to the script file through the Start menu.

2. Copy the file from a network share to the user's PC in a logon script. This approach requires the system administrator to modify one of the site logon scripts to perform the file copy to the user's application data folder.
 3. Create the environment variable FARStartupPath and assign it the file path where a FARStartup.XML can be found. Note that the environment variable value does NOT include the FARStartup.XML filename.
- **Family file locations** are shown on the bottom section of the Configure FAR dialog. The family file locations specify the list of folders that contain Revit families that can be manipulated through the FAR Manager and BIM Manager applications. Right-click on the file locations list to see the context menu. The context menu contains options to Add, Delete, and Edit family locations.
 - **Add Family Location** displays a dialog box for entry of a descriptive label (the Family location name) and path (Family file location) to a location that contains Revit families. The path can also be expressed as a UNC path.



- Delete Family Location remove the highlighted family location information. Deleting the family location information does NOT affect any files stored at that location.
- Edit Family Location displays a dialog box through which you can change the label and location information.

Edit Family ✕

Family location name:

Family file location: